

# AVF SERIES

VARIABLE FREQUENCY REGULATION SPEED

THREE PHASES ASYNCHRONOUS MOTORS

(H80-450)

**AVF SERIES** VARIABLE FREQUENCY REGULATION SPEED THREE PHASES ASYNCHRONOUS MOTORS



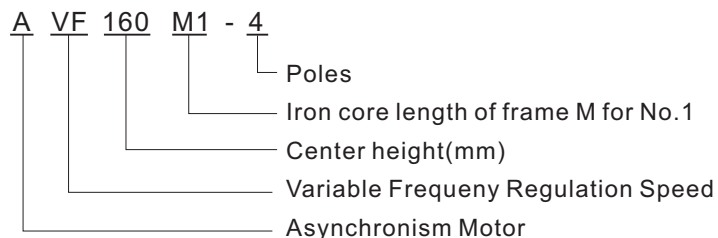
**General Description**

This series electric motor is designed for blower fans and other special devices. The protection level is IP55. The mounting types include IMV30, IMV1, IMB3, and IMB35. Rated frequency: 50Hz (or 10Hz, customized). Scope of speed regulation: 5~50Hz (or 2~100Hz). Rated power: 0.18~18.5kW. No. of electrodes: 4, 6, 8 (or 10, 14). Insulating level: F. It covers three categories including blower type and Y series in terms of dimension, meeting various requirements. The product may also be customized for special user. All of its performance indicators meet or exceed the specifications of Y series motors. In comparison to YVP series frequency conversion motors, its power factor has improved by 2~4 percents and the noise is reduced by 20~25dB(A). Blower speed is controlled based on actual need of temperature decrease of the blow during operation, in order to save energy and reduce noise. The energy saving ratio could reach 20%. The product is taking a lead in China, being as a kind of replacement for imported ones. This series is extremely suitable for the use of intelligent building, automatic control system, and places requiring automatic temperature decrease and ventilation regulation. It could form unmanned monitoring system by combining with frequency converter and computer system. The product with environmental and energy saving design, is now available in market.

**Basic Parameters**

- Rated voltage: 380V
- Rated frequency: 50Hz
- Protection class: IP54
- Insulation class: Class F
- Colling type: IC416
- Service mode: S1
- Ambient temperature:  $-15^{\circ}\text{C} \leq \leq 40^{\circ}\text{C}$
- Altitude: Not exceeding 1000 meters
- Connection: Y Star-connection for 55kW and below,  
 $\Delta$  Delta-connection for 55kW and above

**Meaning Of Type Code**



**Installation Type**

B3	B6	B7	B8	V5	V6
H80~450			H80~160		

B35	V15	V36	B5	V1	V3
H80~450	H80~160		H80~280	H80~450	H80~160

**AVF SERIES** VARIABLE FREQUENCY REGULATION SPEED THREE PHASES ASYNCHRONOUS MOTORS

Technical Data

Synchronous speed 1500 r/min (4-pole), 350V, 50Hz

Type	Nominal power (kW)	Nominal current (A)	Rated output torque (N.m)	Rated speed (r/min)	Locked torque Rated torque	Max.torque Rated torque	moment of inertia (kg.m <sup>2</sup> )	Weight (kg)
AVF80M1-4	0.55	1.5	3.5	1390	1.25-2.0	2.8	0.0018	17
AVF80M2-4	0.75	2	4.7	1390	1.25-2.0	2.8	0.0021	18
AVF90S-4	1.1	2.8	7	1400	1.25-2.0	2.8	0.0021	22
AVF90L-4	1.5	3.7	9.5	1400	1.25-2.0	2.8	0.0027	27
AVF100L1-4	2.2	5.1	14	1430	1.25-2.0	2.8	0.0054	34
AVF100L2-4	3	6.8	19	1430	1.25-2.0	2.8	0.0067	38
AVF112M-4	4	8.7	25.4	1440	1.25-2.0	2.8	0.0095	43
AVF132S-4	5.5	11.4	35	1440	1.25-2.0	2.8	0.0214	68
AVF132M-4	7.5	15.3	47.7	1440	1.25-2.0	2.8	0.0296	81
AVF160M-4	11	23	72	1460	1.25-2.0	2.8	0.0921	114
AVF160L-4	15	31	98	1460	1.25-2.0	2.8	0.112	120
AVF180M-4	18.5	36	120	1470	1.25-2.0	2.8	0.139	187
AVF180L-4	22	42.5	143	1470	1.25-2.0	2.8	0.158	195
AVF200L-4	30	57	195	1470	1.25-2.0	2.8	0.263	280
AVF225S-4	37	70	239	1480	1.25-2.0	2.8	0.406	289
AVF225M-4	45	84.2	290	1480	1.25-2.0	2.8	0.469	325
AVF250M-4	55	103	355	1480	1.25-1.7	2.8	0.66	427
AVF280S-4	75	140	484	1480	1.25-1.7	2.8	1.12	572
AVF280M-4	90	164	581	1480	1.25-1.7	2.8	1.46	677
AVF315S-4	110	201	705	1490	1.25-1.7	2.8	3.11	867
AVF315M-4	132	240	846	1490	1.25-1.7	2.8	3.62	1023
AVF315L1-4	160	289	1025	1490	1.25-1.7	2.8	4.13	1092
AVF315L2-4	200	362	1282	1490	1.25-1.7	2.8	4.94	1161
AVF355M1-4	220	391	1409	1491	1.25-1.7	3.0	6.36	1580
AVF355M2-4	250	439	1601	1491	1.25-1.7	3.0	7.17	1660
AVF355L1-4	280	490	1793	1491	1.25-1.7	3.0	7.9	1730
AVF355L2-4	315	550	2017	1491	1.25-1.7	3.0	8.92	1900
AVF400M1-4	355	625	2273	1491	1.25-1.7	3.0	19.62	2310
AVF400M2-4	400	700	2562	1491	1.25-1.7	3.0	21.75	2430
AVF400M3-4	450	775	2882	1491	1.25-1.7	3.0	24.77	2580
AVF400L1-4	500	860	3202	1491	1.25-1.7	3.0	26.09	2900
AVF400L2-4	560	955	3586	1491	1.25-1.7	3.0	28.67	3120
AVF400L3-4	630	1060	4035	1491	1.25-1.7	3.0	30.49	3380
AVF450 1-4	630	1120	4027	1494	1.25-1.7	3.0	36.67	3950
AVF450 2-4	710	1256	4538	1494	1.25-1.7	3.0	39.8	4120
AVF450 3-4	800	1405	5113	1494	1.25-1.7	3.0	12.82	4450
AVF450 4-4	900	1575	5753	1494	1.25-1.7	3.0	44.54	4980

**AVF SERIES** VARIABLE FREQUENCY REGULATION SPEED THREE PHASES ASYNCHRONOUS MOTORS

**Technical Data**

Synchronous speed 1000 r/min (6-pole), 350V, 50Hz

Type	Nominal power (kW)	Nominal current (A)	Rated output torque (N.m)	Rated speed (r/min)	<u>Locked torque</u> Rated torque	<u>Max.torque</u> Rated torque	moment of inertia (kg.m <sup>2</sup> )	Weight (kg)
AVF90S-6	0.75	2.5	7.9	910	1.25-2.0	2.8	0.0029	23
AVF90L-6	1.1	3.3	11.5	910	1.25-2.0	2.8	0.0035	25
AVF100L-6	1.5	4.2	15.2	940	1.25-2.0	2.8	0.0069	33
AVF112M-6	2.2	6	22.3	940	1.25-2.0	2.8	0.0138	45
AVF132S-6	3	7	30	960	1.25-2.0	2.8	0.0286	63
AVF132M1-6	4	7.5	40	960	1.25-2.0	2.8	0.0357	73
AVF132M2-6	5.5	9.7	54.7	960	1.25-2.0	2.8	0.0449	84
AVF160M-6	7.5	17	74	970	1.25-2.0	2.8	0.0932	114
AVF160L-6	11	25	108	970	1.25-2.0	2.8	0.116	120
AVF180L-6	15	31.5	148	970	1.25-2.0	2.8	0.207	200
AVF200L1-6	18.5	38	182	970	1.25-2.0	2.8	0.315	230
AVF200L2-6	22	45	217	970	1.25-2.0	2.8	0.36	260
AVF225M-6	30	60	292	980	1.25-2.0	2.8	0.547	297
AVF250M-6	37	72	361	980	1.25-1.7	2.8	0.834	408
AVF280S-6	45	85.5	438	980	1.25-1.7	2.8	1.39	546
AVF280M-6	55	104	536	980	1.25-1.7	2.8	1.65	605
AVF315S-6	75	141	723	990	1.25-1.7	2.8	4.11	870
AVF315M-6	90	169	868	990	1.25-1.7	2.8	4.78	1025
AVF315L1-6	110	210	161	990	1.25-1.7	2.8	5.45	1098
AVF315L2-6	132	246	1273	990	1.25-1.7	3.0	6.12	1165
AVF355M1-6	160	300	1540	992	1.25-1.7	3.0	7.91	1454
AVF355M2-6	185	345	1781	992		3.0	8.82	1593
AVF355M3-6	200	360	1925	992	1.25-1.7	3.0	9.73	1600
AVF355L1-6	220	410	2118	992	1.25-1.7	3.0	11.19	1670
AVF355L2-6	250	460	2406	992	1.25-1.7	3.0	11.91	1700
AVF400M1-6	280	505	2692	993	1.25-1.7	3.0	23.17	2310
AVF400M2-6	315	565	3029	993	1.25-1.7	3.0	24.45	1430
AVF400M3-6	355	630	3414	993	1.25-1.7	3.0	26.01	1580
AVF400L1-6	400	705	3846	993	1.25-1.7	3.0	60.19	1900
AVF400L2-6	450	790	4327	993	1.25-1.7	3.0	32.86	3120
AVF400L3-6	500	875	4808	993	1.25-1.7	3.0	36.11	3380
AVF450 1-6	500	932	4798	995	1.25-1.7	3.0	38.85	3950
AVF450 2-6	560	1040	5374	995	1.25-1.7	3.0	41.56	4120
AVF450 3-6	630	1165	6046	995	1.25-1.7	3.0	44.28	4450
AVF450 4-6	710	1310	6814	995	1.25-1.7	3.0	46.13	4980

**AVF SERIES** VARIABLE FREQUENCY REGULATION SPEED THREE PHASES ASYNCHRONOUS MOTORS

**Technical Data**

Synchronous speed 750 r/min (8-pole), 350V, 50Hz

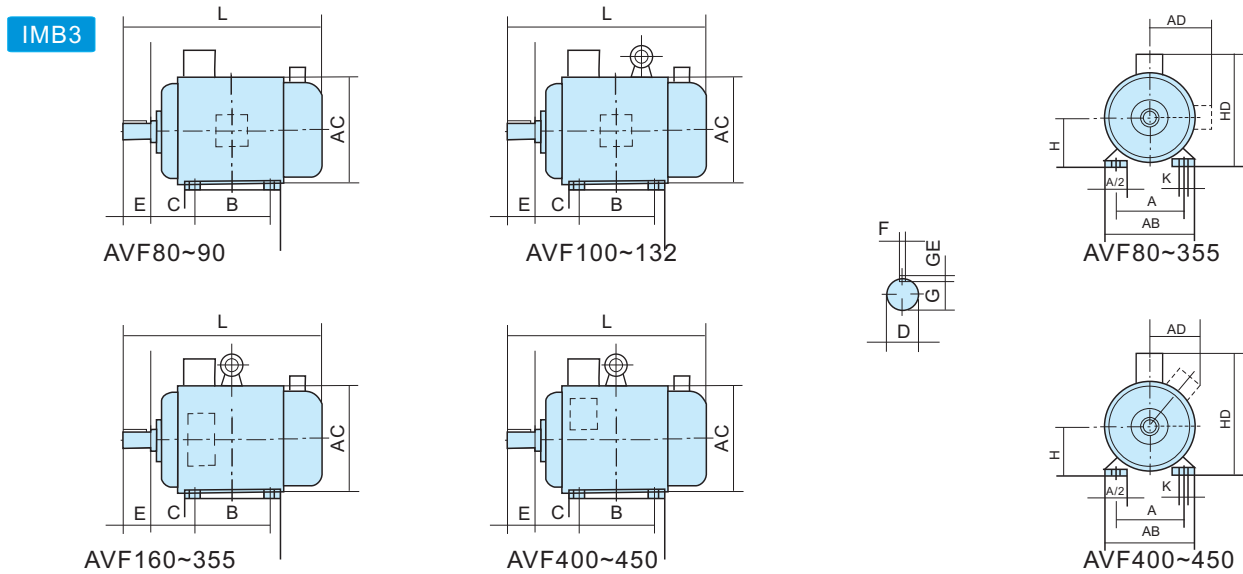
Type	Nominal power (kW)	Nominal current (A)	Rated output torque (N.m)	Rated speed (r/min)	<u>Locked torque</u> Rated torque	<u>Max.torque</u> Rated torque	moment of inertia (kg.m <sup>2</sup> )	Weight (kg)
AVF132S-8	2.2	6	30	710	1.25-2.0	2.8	0.0314	63
AVF132M-8	3	7.8	40	710	1.25-2.0	2.8	0.0395	79
AVF160M1-8	4	10	53	720	1.25-2.0	2.8	0.0931	119
AVF160M2-8	5.5	13.5	73	720	1.25-2.0	2.8	0.094	130
AVF160L-8	7.5	18	99	720	1.25-2.0	2.8	0.126	145
AVF180L-8	11	25	144	730	1.25-2.0	2.8	0.203	184
AVF200L-8	15	34	196	730	1.25-2.0	2.8	0.339	250
AVF225S-8	18.5	41.5	242	730	1.25-2.0	2.8	0.491	266
AVF225M-8	22	48	284	740	1.25-1.7	2.8	0.547	292
AVF250M-8	30	63	387	740	1.25-1.7	2.8	0.834	405
AVF280S-8	37	78.5	477	740	1.25-1.7	2.8	1.39	520
AVF280M-8	45	93.5	581	740	1.25-1.7	2.8	1.65	292
AVF315S-8	55	114	710	740	1.25-1.7	2.8	4.79	1000
AVF315M-8	75	152	968	740	1.25-1.7	2.8	5.58	1100
AVF315L1-8	90	179	1161	740	1.25-1.7	2.8	6.37	1160
AVF315L2-8	110	218	1419	740	1.25-1.7	2.8	7.23	1230
AVF355M1-8	132	270	1692	745	1.25-1.7	3.0	9.07	1325
AVF355M2-8	160	325	2051	745	1.25-1.7	3.0	10.88	1345
AVF355L1-8	185	370	2371	745	1.25-1.7	3.0	12.47	1360
AVF355L2-8	200	400	2563	745	1.25-1.7	3.0	13.38	1375
AVF400M1-8	220	420	2820	745	1.25-1.7	3.0	20.92	2310
AVF400M2-8	250	475	3204	745	1.25-1.7	3.0	24.5	2430
AVF400M3-8	280	530	3589	745	1.25-1.7	3.0	26.05	2580
AVF400L1-8	315	585	4038	745	1.25-1.7	3.0	30.25	2900
AVF400L2-8	355	660	4550	745	1.25-1.7	3.0	31.84	3120
AVF400L3-8	380	705	4871	745	1.25-1.7	3.0	32.91	3380
AVF400L4-8	400	740	5127	745	1.25-1.7	3.0	36.19	3620
AVF450 1-8	400	790	5120	746	1.25-1.7	3.0	38.85	3950
AVF450 2-8	450	880	5760	746	1.25-1.7	3.0	41.56	4120
AVF450 3-8	500	965	6400	746	1.25-1.7	3.0	44.28	4450
AVF450 4-8	500	1072	7168	746	1.25-1.7	3.0	46.13	4980

Synchronous speed 600 r/min (10-pole), 350V, 50Hz

Type	Nominal power (kW)	Nominal current (A)	Rated output torque (N.m)	Rated speed (r/min)	<u>Locked torque</u> Rated torque	<u>Max.torque</u> Rated torque	moment of inertia (kg.m <sup>2</sup> )	Weight (kg)
AVF315S-10	45	99	722	595	1.25-2.0	3.0	5.35	700
AVF315M-10	55	120	884	595	1.25-1.7	3.0	6.23	995
AVF315L2-10	75	162	1205	595	1.25-1.7	3.0	6.87	1250
AVF355M1-10	90	210	1444	595	1.25-1.7	3.0	7.99	1400
AVF355M2-10	110	250	1764	595	1.25-1.7	3.0	9.13	1600
AVF355M3-9	132	290	2118	595	1.25-1.7	3.0	10.96	1800
AVF355L-10	160	350	2568	595	1.25-1.7	3.0	13.48	2000
AVF400M1-10	185	385	2969	595	1.25-1.7	3.0	24.96	2310
AVF400M2-10	200	415	3210	595	1.25-1.7	3.0	26.55	2430
AVF400M3-10	220	455	3531	595	1.25-1.7	3.0	28.67	2580
AVF400L1-10	250	510	4012	595	1.25-1.7	3.0	30.81	2900
AVF400L2-10	280	570	4494	595	1.25-1.7	3.0	30.81	3120
AVF400L3-10	315	640	5055	595	1.25-1.7	3.0	33.53	3380
AVF400L4-10	355	720	5697	595	1.25-1.7	3.0	36.16	3620
AVF450 2-10	355	760	5688	596	1.25-1.7	3.0	38.85	3950
AVF450 3-10	400	845	6409	596	1.25-1.7	3.0	40.21	4120
AVF450 4-10	450	930	7210	596	1.25-1.7	3.0	43.89	4450

**AVF SERIES** VARIABLE FREQUENCY REGULATION SPEED THREE PHASES ASYNCHRONOUS MOTORS

Installation And External Dimension



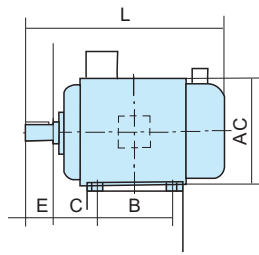
Frame With Feet, End Bracket Without Flange

Frame No.	Mounting dimensions and tolerance																		Overall dimension (Limiting Value)																																								
	A		A/2			B		C			D		E		F		G		H		K			AB	AC	AD	HD	L																															
	Basic size	Basic size	Size Tolerance	Basic size	Basic size	Size Tolerance	Basic size	Size Tolerance	Basic size	Size Tolerance	Basic size	Size Tolerance	Basic size	Size Tolerance	Basic size	Size Tolerance	Basic size	Size Tolerance	Basic size	Basic size	Size Tolerance																																						
80M	125	62.5	±0.5 $\phi$	100	50	±1.5	19	+0.009 -0.004	40	±0.31	6	0 -0.030	15.5	0 -0.10	80	0 -0.5	10	+0.360 0	$\Phi 1.0\phi$	165	175	145	220	370																																			
90S	140	70		100	56		24		60		8	20	90	180	195					155	250	410																																					
90M		125		28	112		205																215	180	270	465																																	
100L	160	80		140	63		±2.0		+0.018 +0.002		80	10	33	132	270					275	210	345	570																																				
112M	190	95		140	70																			38	120	112	230	240	190	300	480																												
132S	216	108		140	89																			42								160	160	270	275	210	345	530																					
132M				178	15																			175	570																																		
160M	254	127		210	108																			±3.0	+0.030 +0.011	140	12	37	160	320	330	255	420	715																									
160L				254	48																														180	180	280	455	815																				
180M	279	139.5		241	121																														55	6	0 -0.043	49	200	395	420	305	505	850															
180L			279	48	180	180		280		455						815																																											
200L	318	159	305	133	±0.75 $\phi$	+0.035 +0.013		170		6						49	200	395	420																305	505	850																						
225S	356	178	286	149																																		60	225	225	435	470	335	560	915														
225M			311	19			435		470		335	560	915																																														
250M	406	203	349	168			±4.0		+0.035 +0.013		170	18	53	-0.20	250					490	510	370	615															980																					
280S	457	228.5	368	190																																			65	280	280	550	580	410	680	1085													
280M			719	24																																			550								580	410	680	1135									
315S	508	254	406	±4.0																				+0.035 +0.013	170	22	71	315	0 -1.0	315	635	645	530	845					1285																				
315M			457																																					216	80	28	315	635	645	530	845	1395											
315L			508																																					170	28								315	635	645	530	845	1395					
355M	610	305	560																																					95	±0.57	210	25	86	355	730	710	550	900	1660									
355L			630		110	400		806		855						680	1100	2100																																									
400M	686	343	630		110	±0.57		210		28						100	400	806	855																680	1100	2100																						
400L			710		120																																			400											806	855	680	1100	2100				
450	800	400	1000		130		±0.57		210		32	0 -0.062	119	450	990					930	940	1380	2500																																				

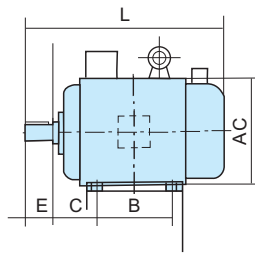
AVF SERIES VARIABLE FREQUENCY REGULATION SPEED THREE PHASES ASYNCHRONOUS MOTORS

Installation And External Dimension

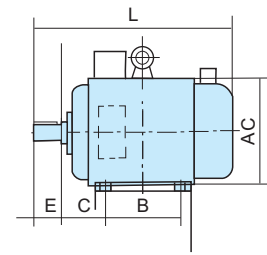
IMB35



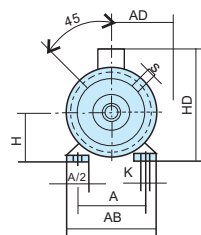
AVF80~90



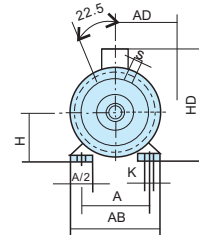
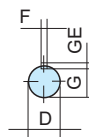
AVF100~132



AVF160~450



AVF80~200



AVF225~450

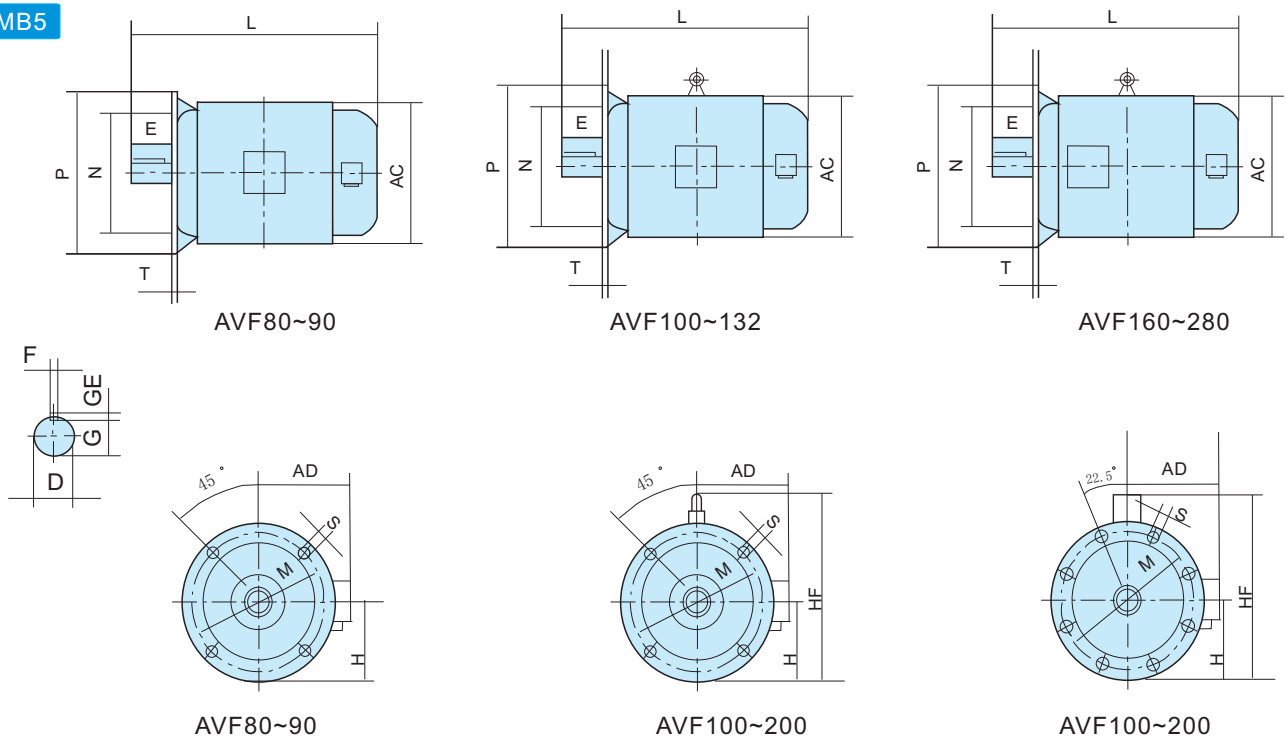
Frame With Feet, End Bracket Without Flange (With Hole)

Frame No.	Flange No.	Mounting dimensions and tolerance																				Overall dimension (Limiting Value)																								
		A		A/2		B		C		D		E		F		G		H		K		M	N		P	R		S		T	Flange holes	AB	AC	AD	HD	L										
		Basic size	Basic size	location tolerance	Basic size	Basic size	Size Tolerance	Basic size	Size Tolerance	Basic size	Size Tolerance	Basic size	Size Tolerance	Basic size	Size Tolerance	Basic size	Size Tolerance	Basic size	Size Tolerance	Basic size	Size Tolerance		Basic size	Size Tolerance		Basic size	Size Tolerance	Basic size	Size Tolerance								Basic size	Size Tolerance	Basic size	Size Tolerance						
80M		125	62.5		100	50		19		40	6	0	15.5	0	80							160	130	200		±1.5	12			3.5					165	175	145	220	370							
90S	FF165	140	70		100	56	±1.5	24	+0.009	50	±0.31		20		90						10	+0.360	0															180	195	155	250	380				
90M					125																																		410							
100L	FF215	160	80	±0.5 φ	140	63				60		0	24		100							215	180					+0.43	0	φ1.0 φ										205	215	180	270	465		
112M		190	95		140	70	±2.0			60	±0.37				112																									230	240	190	300	480		
132S	FF265	216	108		140	89				80			33		132						12																					270	275	210	345	530
132M					178				+0.018													265	230	300																			570			
160M		254	127		210	108				42			37		160						0	-0.5																					680			
160L	FF300				254																	300	250	350																			715			
180M		279	139.5		241	121	±3.0			110	±0.43		42.5		180						15																						775			
180L				±0.75 φ	279																																						815			
200L	FF350	318	159		305	133				55			49		200							350	300	±0.016	400																				850	
225S	FF400	356	178		286	149			+0.030	60	±0.011		53	0	225						19																						885			
225M					311									-0.20																												915				
250M		406	203		349	168				140			58		250																												980			
280S	FF500	457	228.5		368	190							67.5		280						24																						1085			
280M					719																																						1135			
315S					406																																						1285			
315M	FF600	508	254		457	216	±4.0			170			71	0	315						28																						1395			
315L				±1.0 φ	508																																									
355M	FF740	610	305		560	254			+0.035	95	±0.013		86		355																															
355L					630																																									
400M					630					110																																				
400L	FF840	686	343		710	280				210	±0.57		109	0	400						35	+0.620	0																							
450	FF1080	800	400		1000					130			119		450						42																									

**AVF SERIES** VARIABLE FREQUENCY REGULATION SPEED THREE PHASES ASYNCHRONOUS MOTORS

Installation And External Dimension

IMB5



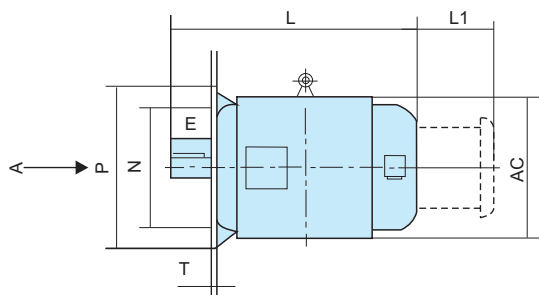
Frame No.	Flange No.	Mounting dimensions and tolerance																			Overall dimension (Limiting Value)						
		D		E		F		G		M	N		P	R		S		T		Flange holes	AB	AC	AD	L			
		Basic size	Size Tolerance	Basic size	Size Tolerance	Basic size	Size Tolerance	Basic size	Size Tolerance		Basic size	Size Tolerance		Basic size	Size Tolerance	Basic size	Size Tolerance	location tolerance	Basic size						Size Tolerance		
80M	FF165	19	+0.009 -0.004	40	±0.31	6	0 -0.030	15.5	0 -0.10	165	130	+0.014 -0.011	200	±1.5	12	+0.43 0	Φ1.0	3.5	0 -0.120	4	175	145		370			
90S		24		50		8	20	215	180		250		195		155						380						
90M		24		50		8	20	215	180		250		195		155						410						
100L	FF215	28	+0.018 +0.002	60	±0.37	10	0 -0.036	24	0 -0.20	215	180	+0.016 -0.013	250	±2.0	15	+0.43 0	Φ1.0	4	0 -0.120	4	215	180	245	465			
112M				60			10	24													215	180	250	240	190	265	480
132S				60			10	24													215	180	250	240	190	265	480
132M	FF265	38	+0.018 +0.002	80	±0.43	10	0 -0.043	33	0 -0.20	265	230	300	±3.0	19	+0.52 0	Φ1.5	5	0 -0.120	8	275	210	315	530				
160M	38	80		10		33	265	230		300	275	210								315	570						
160L	38	80		10		33	265	230		300	275	210								315	570						
160M	FF300	42	+0.030 +0.011	110	±0.43	12	0 -0.043	37	0 -0.20	300	250	+0.016 -0.013	350	±3.0	19	+0.52 0	Φ1.5	5	0 -0.120	8	330	255	385	660			
160L						12		37													300	250	350	330	255	385	715
180M						12		37													300	250	350	330	255	385	715
180L	48	+0.030 +0.011	110	±0.43	147	0 -0.043	42.5	0 -0.20	300	250	+0.016 -0.013	350	±3.0	19	+0.52 0	Φ1.5	5	0 -0.120	8	380	280	430	775				
200L	48				147		42.5													380	280	430	815				
200L	48				147		42.5													380	280	430	815				
200L	FF350	55	+0.030 +0.011	140	±0.5	6	0 -0.052	49	0 -0.20	350	300	±0.016	400	±4.0	19	+0.52 0	Φ1.5	5	0 -0.120	8	420	305	480	850			
225S	55	6				49		350		300	±0.016	400	420								305	480	850				
225M	55	6				49		350		300	±0.016	400	420								305	480	850				
225S	FF400	60	+0.030 +0.011	140	±0.5	18	0 -0.052	53	0 -0.20	400	350	±0.018	450	±4.0	19	+0.52 0	Φ1.5	5	0 -0.120	8	470	335	535	885			
225M						18		53		400	350	±0.018	450								470	335	535	915			
250M						18		53		400	350	±0.018	450								470	335	535	915			
250M	FF500	65	+0.030 +0.011	140	±0.5	18	0 -0.052	58	0 -0.20	500	450	±0.020	550	±4.0	19	+0.52 0	Φ1.5	5	0 -0.120	8	510	370	595	980			
280S						18		58		500	450	±0.020	550								510	370	595	980			
280M						18		58		500	450	±0.020	550								510	370	595	980			
280M	75	+0.030 +0.011	140	±0.5	20	0 -0.052	67.5	0 -0.20	500	450	±0.020	550	±4.0	19	+0.52 0	Φ1.5	5	0 -0.120	8	580	410	650	1085				
280S	20				67.5		500		450	±0.020	550	580								410	650	1085					
280M	20				67.5		500		450	±0.020	550	580								410	650	1085					



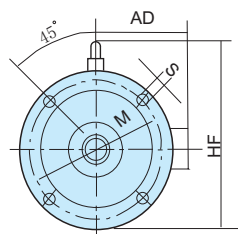
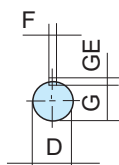
**AVF SERIES** VARIABLE FREQUENCY REGULATION SPEED THREE PHASES ASYNCHRONOUS MOTORS

Installation And External Dimension

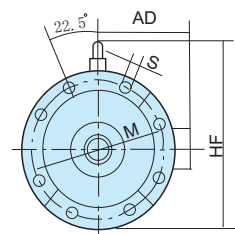
IMV1



AVF160~280



AVF180~200



AVF225~450

Frame No.	Flange No.	Mounting dimensions and tolerance															Overall dimension (Limiting Value)								
		D		E		F		G		M	N		P	R		S		T		Flange holes	AC	AD	HF	L	L1
		Basic size	Size Tolerance	Basic size	Size Tolerance	Basic size	Size Tolerance	Basic size	Size Tolerance		Basic size	Size Tolerance		Basic size	Size Tolerance	Basic size	Size Tolerance	Basic size	Size Tolerance						
180M	FF300	48	+0.030	110	±0.5	147	0	42.5	0	300	250	+0.016	350	±3.0	19	Φ15	5	0 - 0.120	4	380	280	500	775	70	
180L		6																					49		350
200L	FF350	55	+0.030	140	±0.5	18	0	53	-0.20	400	350	±0.018	450	±4.0	24	Φ20	6	0 - 0.150	8	420	305	550	850	80	
225S	60	6																					53		400
225M	FF400	60	+0.030	140	±0.5	18	0	53	-0.20	400	350	±0.018	450	±4.0	24	Φ20	6	0 - 0.150	8	470	335	610	915	80	
250M	65	6																					53		400
280S	FF500	75	+0.030	170	±0.57	20	0	67.5	-0.20	500	450	±0.020	550	±4.0	24	Φ20	6	0 - 0.150	8	510	370	650	980	90	
280M		6																					53		400
315S	FF600	80	+0.035	170	±0.57	22	0	71	-0.20	600	550	±0.022	660	±4.0	24	Φ20	6	0 - 0.150	8	645	530	900	1285	100	
315M		6																					53		400
355M	FF740	95	+0.035	170	±0.57	25	0	86	-0.20	740	680	±0.025	800	±4.0	24	Φ20	6	0 - 0.150	8	710	550	1010	1660	100	
355L		6																					53		400
400M	FF840	110	+0.035	210	±0.57	28	0	100	-0.20	940	880	±0.028	###	±4.0	28	Φ20	6	0 - 0.150	8	855	680	1410	2100	120	
400L		120																					6		53
450	FF1080	130	+0.035	210	±0.57	32	0	119	-0.20	###	1000	###	###	±4.0	28	Φ20	6	0 - 0.150	8	960	940	1550	2500	145	
450	130	6																					53		400

**M&C<sup>®</sup>**  
*ELECTRIC POWER*

**CHINA ELECTRIC MOTOR ASSOCIATION**  
**GUANGDONG M&C ELECTRIC POWER CO.,LTD**

Add:3/f Dizhi Building No.739 Dongfeng Rd.E Guangzhou China

Tel.: 0086-20-89660216

Fax.: 0086-20-89660219

P.C.: 510080

E-mail: [mc@china-electricmotor.com](mailto:mc@china-electricmotor.com)

Website: <http://www.china-electricmotor.com>